

FIGURE 13. Fuel Tank, Lines and Fittings (Sheet 1 of 2)

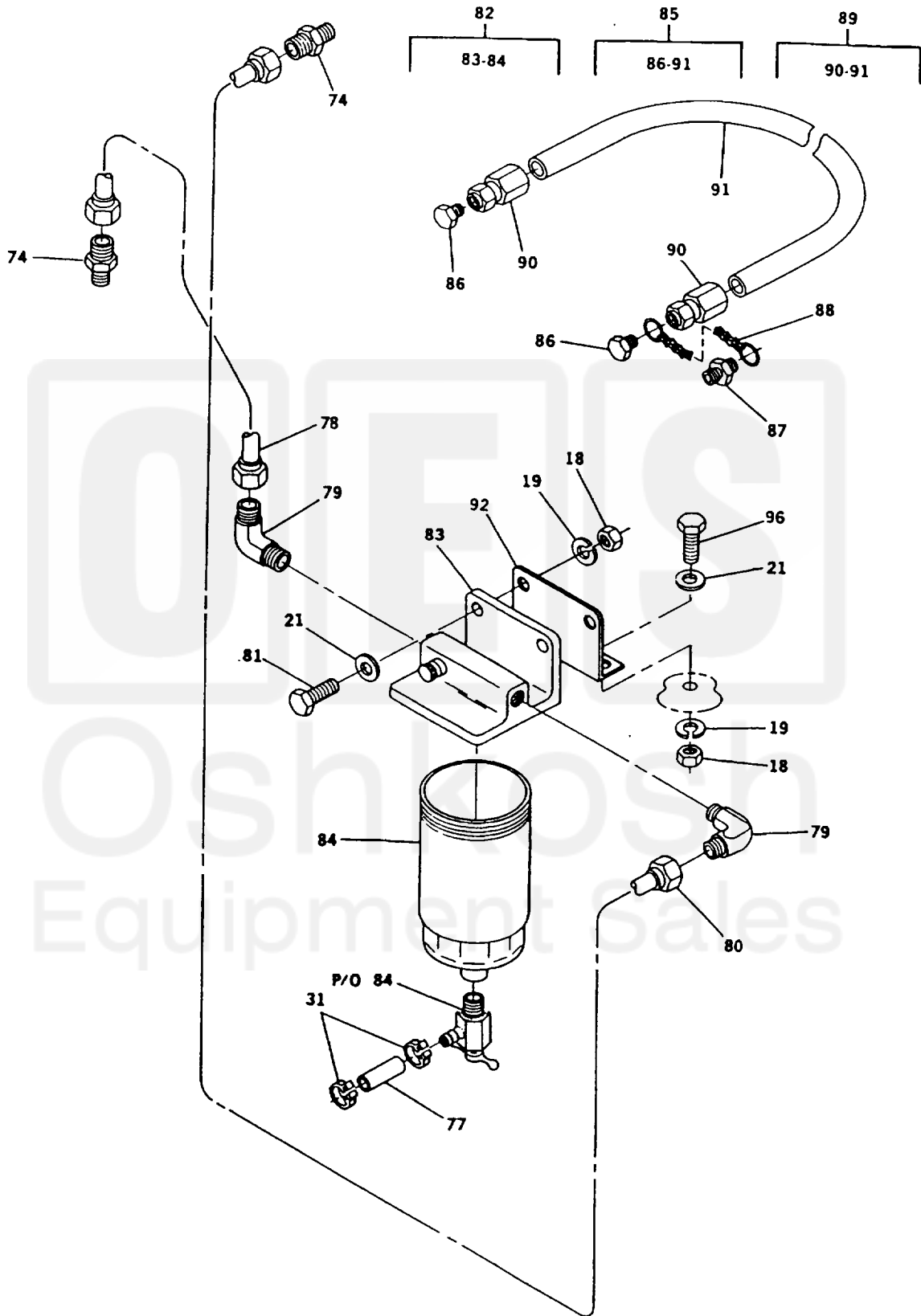


FIGURE 13. Fuel Tank, Lines and Fittings (Sheet 2 of 2)

(1) ITEM NO.	(2) SMR CODE				(3) FSCM	(4) PART NUMBER	(5) DESCRIPTION AND USABLE ON CODE	(6) QTY	(7) USMC QTY PER EQUIP
	a. ARMY	b. FORCE	c. NAVY	d. USMC					
GROUP 06 - FUEL SYSTEM FIG. 13 FUEL TANK, LINES, AND FITTINGS									
1	PAOZZ	PAOZZ			96906	MS35645-1	.CAP, FILLER OPENING	1	
2	PAOZZ	PAOZZ			96906	MS35643-1	.GASKET	1	
3	PAOZZ	PAOZZ			79470	C3059X2	.SEAL NUT, PIPE	1	
4	PAOZZ	PAOZZ			96906	MS51412-8	.WASHER, FLAT	1	
5	PAOZZ	PAOZZ			81343	4-2 140137C	.REDUCER, PIPE	1	
6	PAOZZ	PAOZZ			36378	1001547-01	.ADAPTER, STRAIGHT, PI	1	
7	PAOZZ	PAOZZ			81205	2740-0003	.NUT, PLAIN, ASSEMBLED	8	
8	PAOZZ	PAOZZ			19207	12325869	.BOLT, MACHINE	8	
9	XDOZZ	XB			30554	88-21892	.FILLER NECK, FUEL T	1	
10	XDOZZ	XB			30554	88-21893	.TUBE, FILLER NECK	1	
11	PAOZZ	PAOZZ			81343	SAE J1508-06	.CLAMP, HOSE	2	
12	XDOZZ	XB			30554	88-22111	.TUBE ASSY, OUTLET	1	
13	PAOZZ	PAOZZ			81646	6215	.CLAMP, HOSE	1	
14	PAOZZ	PAOZZ			76599	015916	.CLAMP, HOSE	1	
15	PBOZZ	PBOZZ			30554	88-22068	.HOSE, PERFORMED	1	
16	PAOZA	PAOZA			72850	479735	.FILTER BODY, FLUID	1	
17	PAOZZ	PAOZZ			96906	MS51504A4	.ELBOW, PIPE TO TUBE	1	
18	PAOZZ	PAOZZ			30554	88-22790-1	.NUT, PLAIN, HEXAGON	6	
19	PAOZZ	PAOZZ			96906	MS35338-63	.WASHER, LOCK	6	
20	PAOZZ	PAOZZ			30554	88-20260-31	.BOLT, MACHINE	2	
21	PAOZZ	PAOZZ			96906	MS51412-4	.WASHER, FLAT	6	
22	PAOZZ	PAOZZ			93742	69-539-2	.CAP, TUBE	2	
23	AOOOO	AOO			30554	88-22546	.PUMP ASSEMBLY, FUEL	1	
24	PAOZZ	PAOZZ			96906	MS3367-1-9	..STRAP, TIEDOWN, ELECT	1	
25	PAOZA	PAOZA			27264	03-09-2022	..CONNECTOR, PLUG, ELEC.	1	
26	PAOZZ	PAOZZ			27264	02-09-2103	..CONTACT, ELECTRICAL	2	
27	PAOZZ	PAOZZ			30554	88-21738	..PUMP, FUEL, ELECTRICAL	1	
28	PAOZZ	PAOZZ			96906	MS51860-54	.LOCKNUT, TUBE FITTING	1	
29	PAOZZ	PAOZZ			96906	MS51520A5	.ADAPTER, STRAIGHT, TU	1	
30	PAOZZ	PAOZZ			79470	10404E-504-604-01038	.HOSE ASSEMBLY, NONME	1	
31	PAOZZ	PAOZZ			05657	A8	.CLAMP, HOSE	12	
32	MOOZZ	MOO			30554	88-21604-146	.HOSE, NONMETALLIC MAKE FROM P/N 483666(02280), 33 INCHES REQUIRED	1	
33	MOOZZ	MOO			30554	88-21604-104	. HOSE, NONMETALLIC MAKE FROM P/N 483666(02280), 12 INCHES REQUIRED	2	

(1) ITEM NO.	(2) SMR CODE				(3) FSCM	(4) PART NUMBER	(5) DESCRIPTION AND USABLE ON CODE	(6) QTY	(7) USMC QTY PER EQUIP
	a. ARMY	b. FORCE	c. NAVY	d. USMC					
34	MOOZZ	MOO			30554	88-21604-151	.HOSE, NONMETALLIC MAKE FROM P/N 483666(02280), 20 INCHES REQUIRED	1	
35	XDOZZ	XB			79470	1064X6	.TEE, HOSE	2	
36	PAOZZ	PAOZZ			81343	4-4-4 140424C	.TEE, PIPE	1	
37	PAOZZ	PAOZZ			81343	64 430260B	.ELBOW, PIPE TO HOSE	1	
38	MOOZZ	MOO			30554	88-21604-343	.HOSE, NONMETALLIC MAKE FROM P/N 483666(02280) 9 INCHES REQUIRED	1	
39	PAOZZ	PAOZZ			79470	00906E-606 666 02300	.HOSE ASSEMBLY, NONME	1	
40	PAOZZ	PAOZZ			79470	00906E-60660 6-03	.HOSE ASSEMBLY, NONME	1	
41	PAOZZ	PAOZZ			96906	MS51500A6	.ADAPTER, STRAIGHT, PI	2	
42	PAOZZ	PAOZZ			93061	125HBL-44	.ADAPTER, STRAIGHT, PI	2	
43	PAOZZ	PAOZZ			30554	88-21117	.STUD, FITTING, FUEL	5	
44	PAOZZ	PAOZZ			30554	88-21166	.WASHER, FLAT	5	
45	PAOZZ	PAOZZ			07707	A3816	.NUT	5	
46	PAOZZ	PAOZZ			96906	MS51500A5-4	.ADAPTER, STRAIGHT, PI	1	
47	PAOZZ	PAOZZ			10855	CAC90771	.COCK, SHUTOFF, SCREW	1	
48	PAOZZ	PAOZZ			21450	444069	.ELBOW, PIPE 90 DEGREE	1	
49	PAOZZ	PAOZZ			30327	112B141N	.NIPPLE, PIPE	1	
50	PAOZZ	PAOZZ			30554	88-22790-2	.NUT, PLAIN, HEXAGON	4	
51	PAOZZ	PAOZZ			96906	MS35338-64	.WASHER, LOCK	4	
52	PAOZZ	PAOZZ			80204	B1821BH03C 100N	.BOLT, MACHINE	4	
53	PAOZZ	PAOZZ			96906	MS51412-25	.WASHER, FLAT	4	
54	XDOZZ	XB			30554	88-21854	.HOLDDOWN, FUEL TANK	2	
55	PAOZZ	PAOZZ			96906	MS51492-14	.SCREW, MACHINE	15	
56	PAOZZ	PAOZZ			96906	MS35338-62	.WASHER, LOCK	15	
57	PAOZZ	PAOZZ			96906	MS51412-2	.WASHER, FLAT	15	
58	AOOOO	AOO			30554	88-22547	.SWITCH, FUEL SENDER	1	
59	PAOZZ	PAOZZ			96906	MS3367-1-9	..STRAP, TIEDOWN, ELECT	1	
60	PAOZZ	PAOZZ			27264	02-09-2103	..CONTACT, ELECTRICAL	4	
61	PAOZZ	PAOZZ			27264	1490P1	..CONNECTOR BODY, RECE	1	
62	PAOZZ	PAOZZ			30554	88-21121-1	..SWITCH, LIQUID LEVEL	1	
63	PAOZZ	PAOZZ			06555	127677	..SWITCH, LIQUID LEVEL	1	
64	XDOZZ	XB			30554	88-21850	.PICK-UP TUBE ASSY	1	
65	PAOZZ	PAOZZ			30554	88-20286	.GASKET	3	
66	PAOZZ	PAOZZ			30554	88-20492	.SWITCH, LIQUID LEVEL	1	
67	PAOZZ	PAOZZ			96906	MS3367-4-9	..STRAP, TIEDOWN, ELECT	6	
68	PAOZZ	PAOZZ			96906	MS3367-1-9	..STRAP, TIEDOWN, ELECT	2	
69	PAOZZ	PAOZZ			27264	03-09-1042	..CONNECTOR BODY, RECE	1	
70	PAOZZ	PAOZZ			27264	1490P1	..CONNECTOR BODY, RECE	1	

(1) ITEM NO.	(2) SMR CODE				(3) FSCM	(4) PART NUMBER	(5) DESCRIPTION AND USABLE ON CODE	(6) QTY	(7) USMC QTY PER EQUIP
	a. ARMY	b. AIR FORCE	c. NAVY	d. USMC					
71	XAOOO	XAOOO			30554	88-20493	..P C BOARD ASSY, FLO	1	
72	PAOZZ	PAOZZ			27264	02-09-2103	...CONTACT, ELECTRICAL	4	
73	PAOZZ	PAOZZ			27264	02-09-1104	...CONTACT, ELECTRICAL	4	
74	PAOZZ	PAOZZ			98441	6-M14X1.5-F80X-S	.ADAPTER, STRAIGHT, TU	3	
75	PAOZZ	PAOZZ			81646	62606	.CLAMP, HOSE	1	
76	PBOZZ	PBOZZ			30554	88-21043	.TANK, FUEL, ENGINE	1	
77	MOOZZ	MOO			30554	88-21604-339	.HOSE, NONMETALLIC MAKE FROM P/N 483666(02280), 32 INCHES REQUIRED	1	
78	XDOZZ	XB			30554	88-22486	.TUBE, FUEL FILTER	1	
79	PAOZZ	PAOZZ			96906	MS51504A6	.ELBOW, PIPE TO TUBE	2	
80	XDOZZ	XB			30554	88-22485	.TUBE, FILTER INLET	1	
81	PAOZZ	PAOZZ			80204	B1821BH025C100N	.SCREW, CAP, HEXAGON H	4	
82	PBOOO	PBOOO			76009	1640-B	.FILTER ASSEMBLY	1	
83	XAOZZ	XA			76700	Q-54382	..HEAD ASSEMBLY	1	
84	PAOZZ	PAOZZ			76700	85285-F	..FILTER, FLUID DRAIN VALVE SUPPLIED WITH FILTER.	1	
85	PAOZZ	PAOZZ			01276	FA1493FFF3000	HOSE ASSEMBLY, NONME	1	
86	PAOZZ	PAOZZ			81349	M5501/8-F6	.PLUG, PROTECTIVE, DUS	2	
87	PAOZZ	PAOZZ			30780	5-LHTX-B	.NIPPLE, TUBE	1	
88	MOOZZ	MOO			30554	69-668-2	.CHAIN, WELDLESS MAKE FROM P/N RRC27TY2CL6 (81348), 13 LINKS REQUIRED.	1	
89	PAOZZ	PAOZZ			96906	MS28741-5-2992	.HOSE ASSEMBLY, NONME	1	
90	PAOZZ	PAOZZ			00624	4411-5S	..ADAPTER, STRAIGHT, TU	2	
91	MOOZZ	MOO			30554	MS28741-5-2992-2	..HOSE, NONMETALLIC MAKE FROM P/N 303-5 (00624), 299 INCHES REQUIRED.	1	
92	XDOZZ	XB			30554	88-22748	.BRACKET, SUPPORT	1	
93	PAOZZ	PAOZZ			5U990	205-605	.ADAPTER, STRAIGHT, TU	1	
94	MOOZZ	MOO			30554	88-21604-396	.HOSE, NONMETALLIC MAKE FROM P/N 33H581 (80244) 11 INCHES REQUIRED	1	
95	PAOZZ	PAOZZ			96906	MS51500B4-4Z	.ADAPTER, STRAIGHT, PI	1	
96	PAOZZ	PAOZZ			80204	B1821BH025C075N	.SCREW, CAP, HEXAGON H	2	

END OF FIGURE